

PROVIDENCE, R. I.
CITY ENGINEER'S OFFICE
STREET LINE DEPT.

Sept. 27, 1888

014330

Providence R.I.
This plat accompanies
our report of this date.

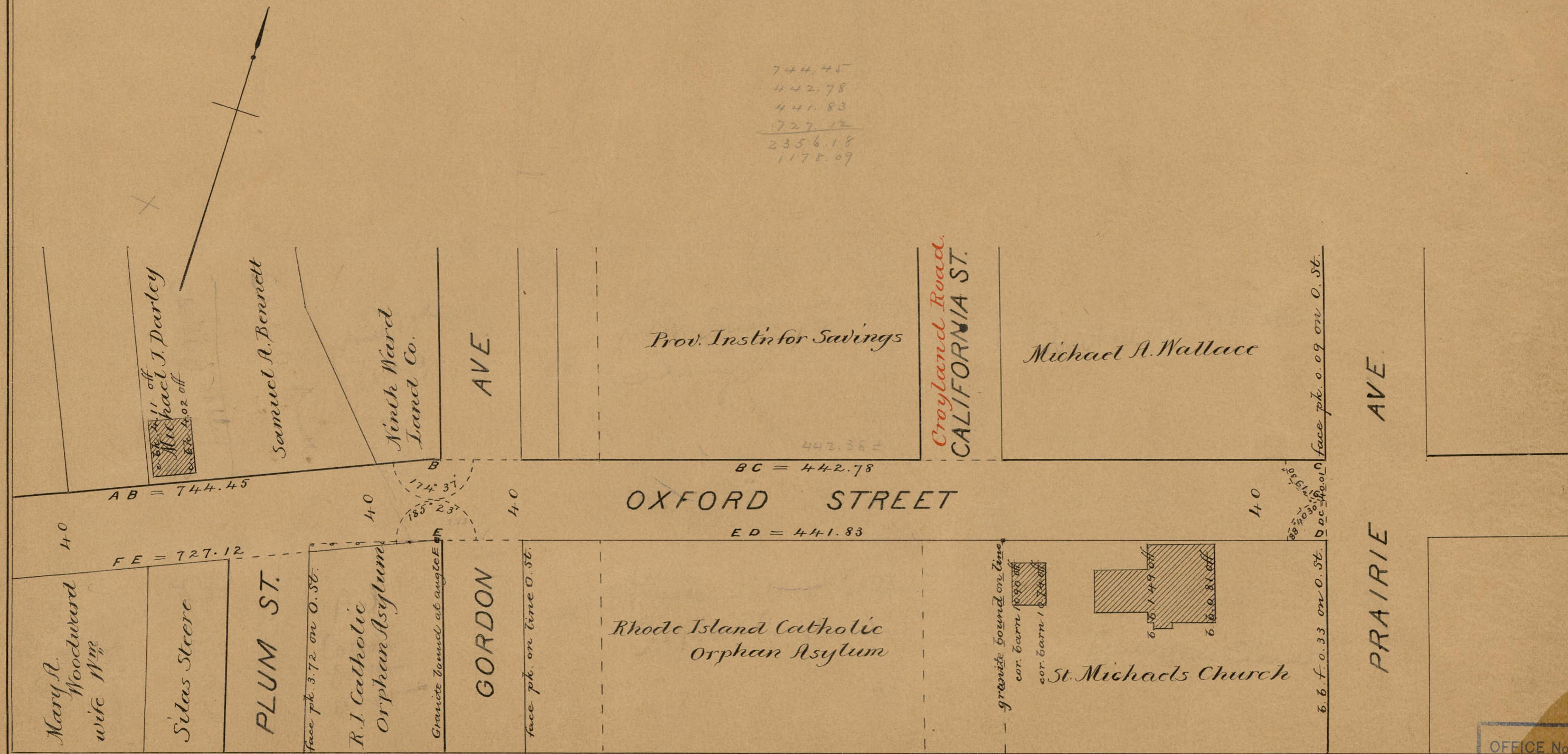
PLAT OF
OXFORD STREET

FROM BROAD ST. TO PRAIRIE AVE.

IN TWO SHEETS.

SCALE 50 FEET PER INCH.

744.45
442.78
441.83
727.12
2356.18
1178.09



OFFICE No.	977D
DRAWER	83
SHEET	B-19

83
B-19